

Vugraphs taken from March 19th 2019 WSDOT workshop, led by Ben Hausenbuiller. Not shown here but mentioned at workshop...construction budget is \$643,000. If concerned about the SR240/Columbia Center Blvd. cloverleaf, share your thoughts with:

Representative Matt Boehnke (8th legislative district),
<http://mattboehnke.houseRepublicans.wa.gov/>,
 who serves on
 the House Transportation Committee

(Prepared by CM Berkowitz 3/28/2019)

SR 240 – Columbia Center Blvd – Pedestrian Facilities

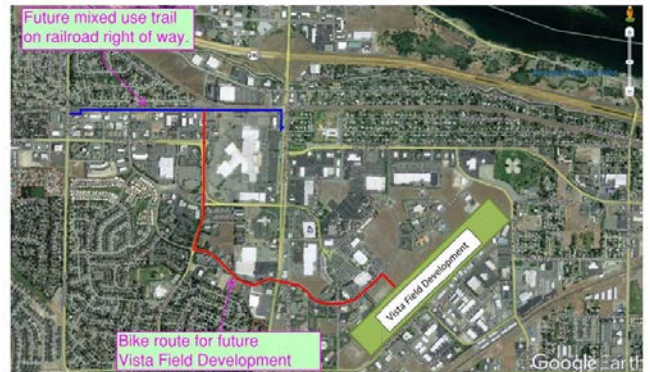
Planning Meeting

Ben Hausenbuiller, Transportation Engineer
 March 19, 2019

City of Richland Review Long Term Plans/Options



City of Kennewick: Review Long Term Plans/Options



Orientation →
 (dashed line shows approximate area of following figures.)



Review Preliminary WSDOT Options

Pedestrian Facilities on both sides (Initial Scope)

- Provide pedestrian facilities on both sides adding/widening sidewalk as needed without allowing Columbia Center Blvd crossing within WSDOT ROW.



Review Preliminary WSDOT Options

Pedestrian Facilities along east side only

- Provide pedestrian facilities on the east side of Columbia Center Blvd adding/widening sidewalk as needed without allowing Columbia Center Blvd crossing within WSDOT ROW.



Review Preliminary WSDOT Options

Pedestrian Facilities along west side only

- Provide pedestrian facilities on the west side of Columbia Center Blvd. from Richland adding/widening sidewalk as needed
- Not desirable to cross double free right ramp to Columbia Center Blvd



Review Preliminary WSDOT Options

Single Pedestrian Route Crossing Columbia Center Blvd

- Provide pedestrian facilities on the west side of Columbia Center Blvd. from Richland adding/widening sidewalk as needed allowing Columbia Center Blvd crossing after the structure and continue into Kennewick along the east side.



Review Preliminary WSDOT Options

Single Pedestrian Route Crossing Columbia Center Blvd

- Provide pedestrian facilities on the west side of Col. Ctr. Blvd. from Richland adding/widening sidewalk as needed allowing Col. Ctr. Blvd crossing after the structure and continue into Kennewick along the east side



Photos - South side ped crossings (4).png



Wrap Up

- Thank you all for your time and participation!
- Contact Info:
 - WSDOT Construction/Design Lead
 - Ben Hausenbueller, 509-987-2409, hausenb@wsdot.wa.gov
 - WSDOT Project Engineer
 - Alex Sanguino, PE, 509-222-2403, sanguia@wsdot.wa.gov